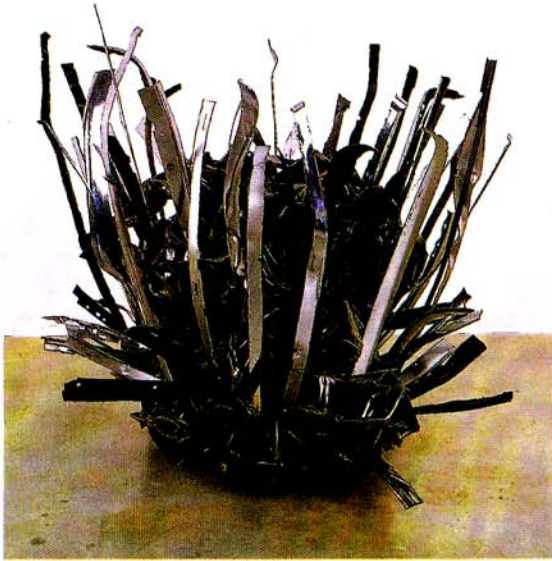


# luxe loves...

## Fair trade



**Basel, schmasel:** Next month's Dallas Art Fair will showcase works including John Chamberlain's painted and chromed steel sculpture *Eroticattaccabanter*, 2007.

With a \$55 million arts magnet school and buildings by the likes of Renzo Piano and Rem Koolhaas, Dallas' culture quotient is soaring. Next month's inaugural **DALLAS ART FAIR** may bump our CQ rating even higher.

The three-day exposition will bring more than 30 dealers from 12 U.S. cities to downtown's Fashion Industry Gallery, transforming the wholesale apparel showrooms into showcases for works by such prominent artists as Chuck Close, Sol LeWitt and Damien Hirst. Also on tap: a symposium series that includes a conversation with local patron (and big-time art world player) Marguerite Hoffman.

"We invited galleries from throughout

the country, prioritizing those that work with collectors and museums here in Dallas," says local art dealer Chris Byrne, who founded the event with FIG and Museum Tower co-developer John Sughrue. "We

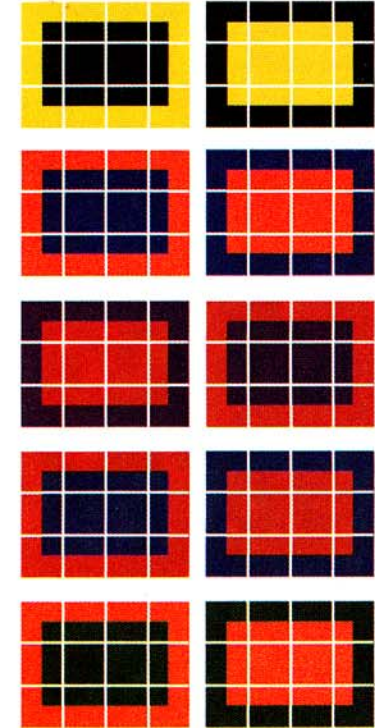
### CULTURE

consider these galleries part of our extended family."

"Anyone with any level of knowledge will be able to enjoy the fair," Byrne adds. "If we're doing a good job, everyone should be able to look at the program and find something that interests them."

Dallas Art Fair, Feb. 6-8, Fashion Industry Gallery, 1807 Ross Ave., [dallasartfair.com](http://dallasartfair.com)

Jason Sheeler



**Donald Judd's**  
*Untitled*  
 (Set of 10 color woodcuts), 1992-93